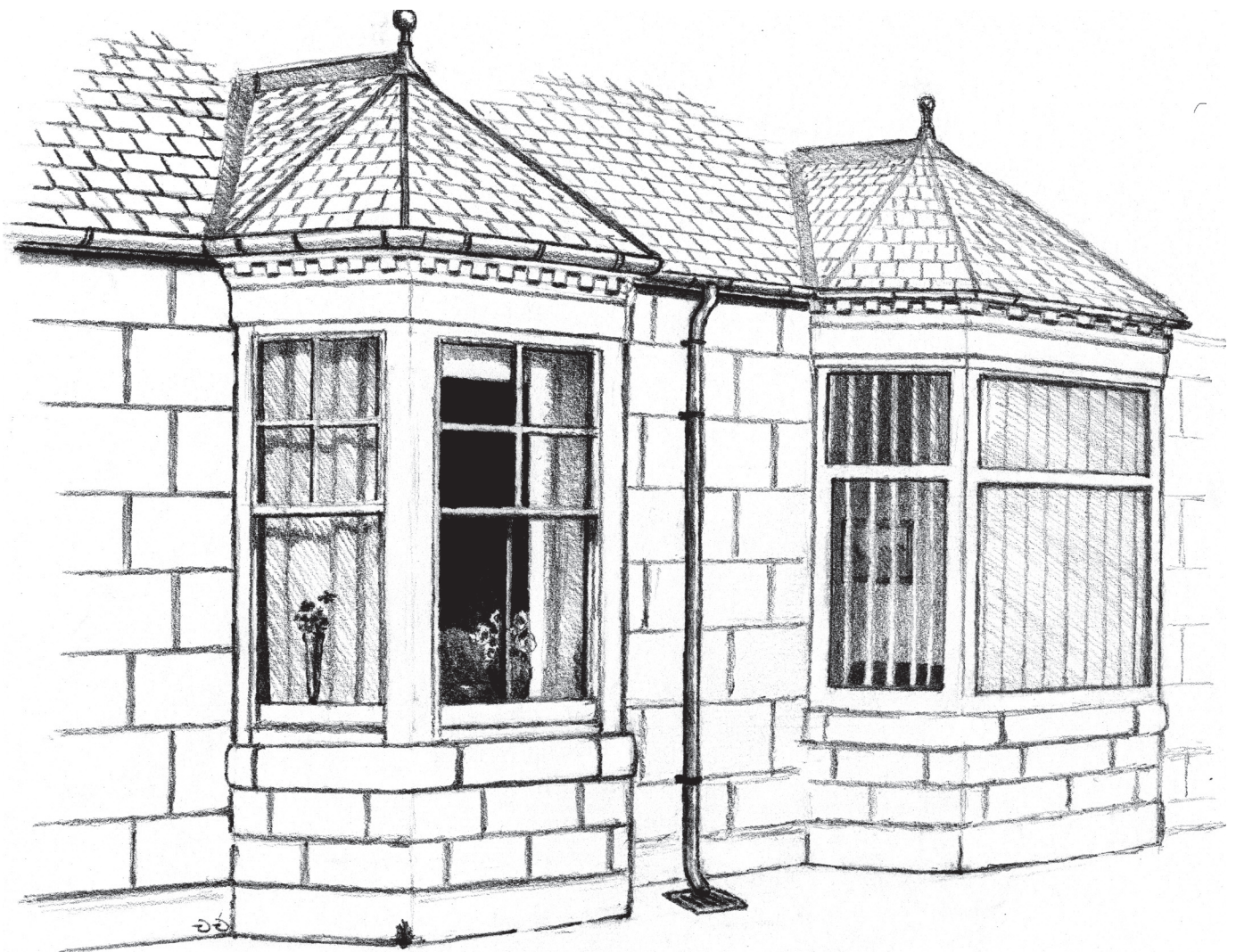


Houses and Homes

in

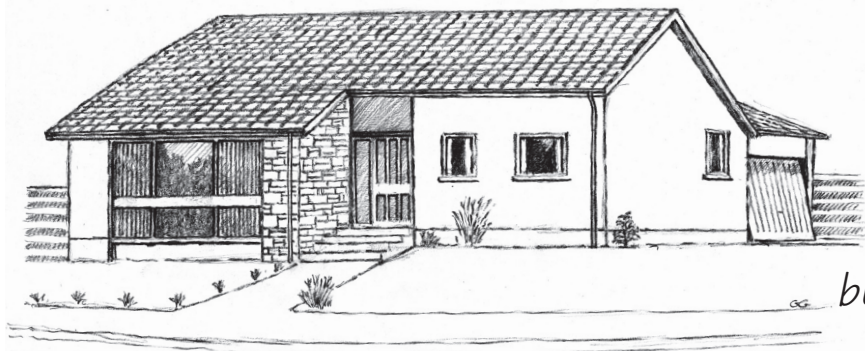
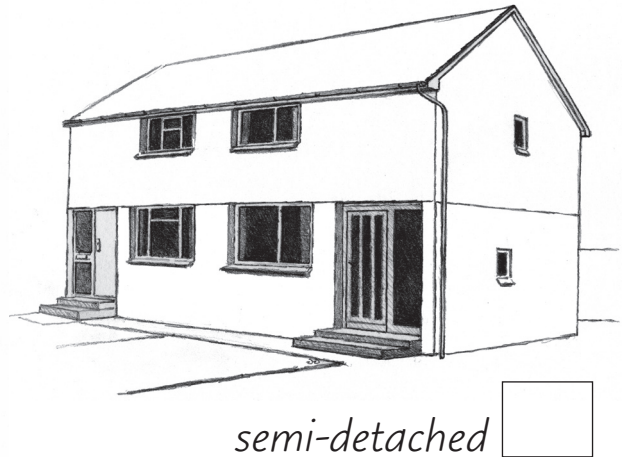
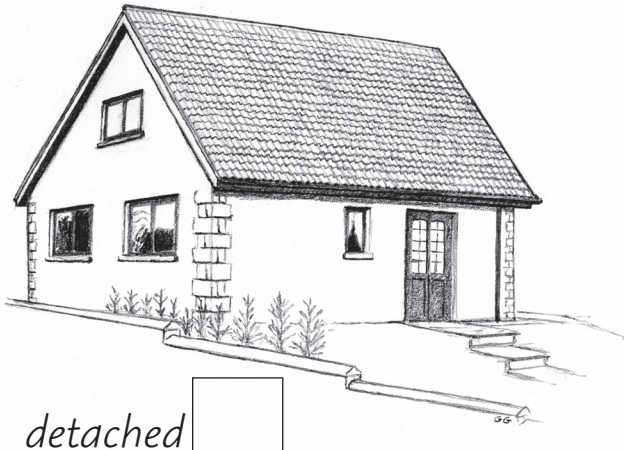


Name

A learning programme for **First/Second Level** focusing on
Types of Homes, Roofs, Walls, Doors and Windows

TYPES OF HOMES

1) Look for these types of homes.



2) Did you see any other type of home? _____

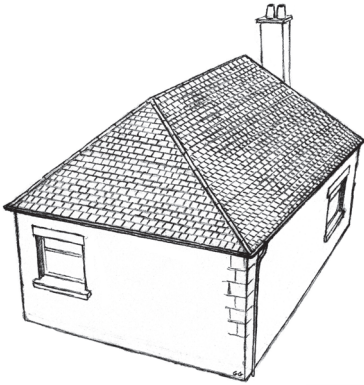
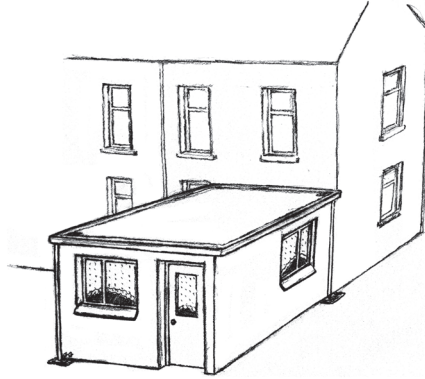
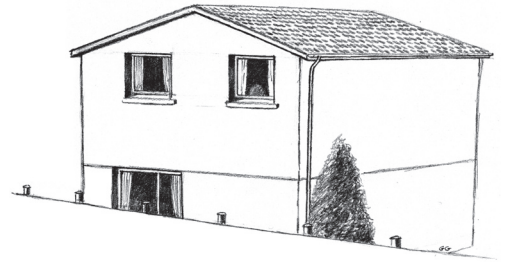
3) Which type of home is most common? _____

4) Which type of home do you live in? _____

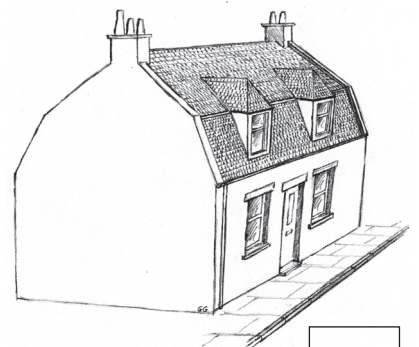
ROOFS

Roofs keep rain and snow out
and keep heat inside the house.

1) Look for these types of roofs. Tick ✓ the ones you see.


☐

☐

☐

2) Draw one you see.


☐

☐

3) Choose a word from the list below to describe the roof you have drawn.

Circle

hipped • flat • pitched • mansard

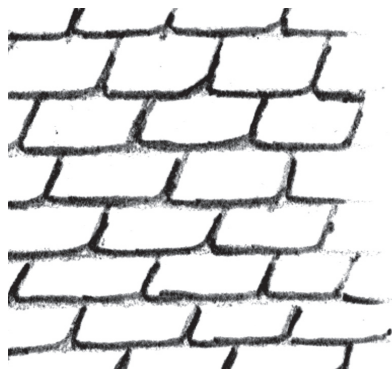
ROOFS

4) When rain falls on a roof it is channelled

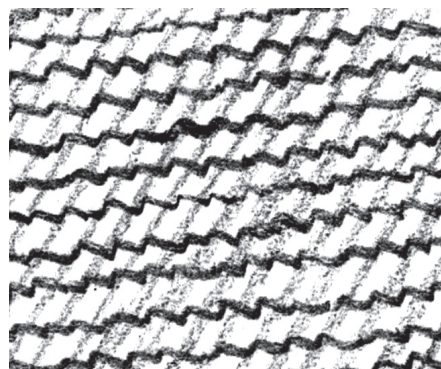
into a _____ Add this to your picture.

5) What building material has been used for the roof?

Tick ✓ or draw.



slates

☐


tiles

☐


Draw if different

6) What else can you see on the roof?

Circle

- ventilation pipe
- guttering
- rooflights
- television aerial
- satellite dish
- chimney
- birds
- plants
- finials

7) Add any other things you see.



WALLS

1) Tick the building materials used to make the walls.

☐

granite

☐

brick

☐

concrete block

☐

wood

☐

Fyfestone

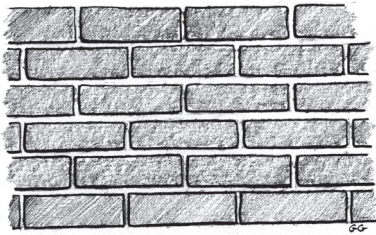
☐

sandstone

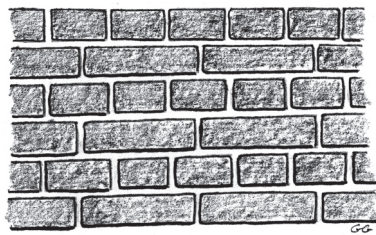
any other _____

When bricks or stones are built together they can make patterns called BONDS.

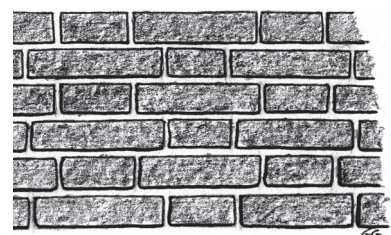
Here are some examples of bonds :



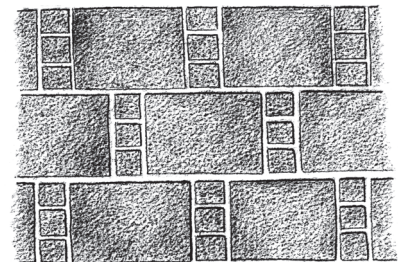
stretcher bond



English bond



Flemish bond



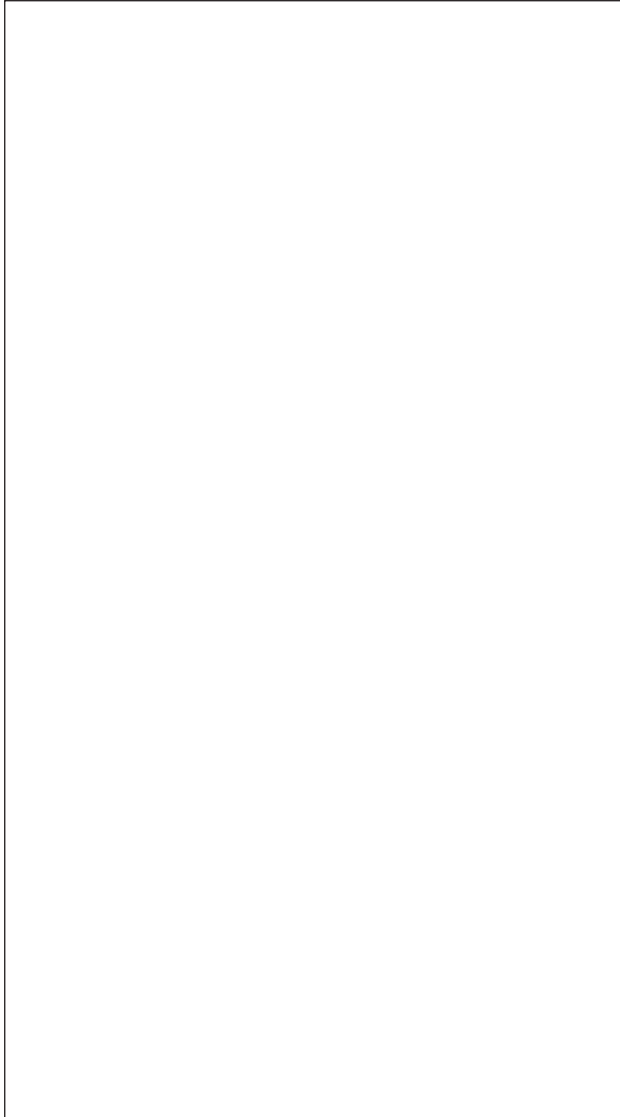
*snecked ashlar
or Aberdeen ashlar*

2) Sketch the pattern on the wall.

3) Which pattern does it resemble most?

DOORS

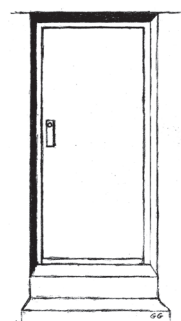
- 1) Look carefully at the houses around you.
 - a) Choose the door you like best.
 - b) Draw it in the box.



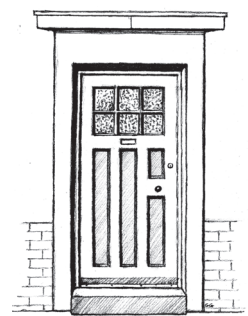
Think about these details as you draw ...

- handle
- keyhole / lock
- letterbox
- glass
- number
- peep-hole
- doorbell / door knocker
- draught excluder
- security entry system

Be careful not to miss anything !!



flush



panelled

- 2) Is the door flush or panelled?

- 3) What is the door made of? Circle

uPVC
(unplasticised
polyvinylchloride)

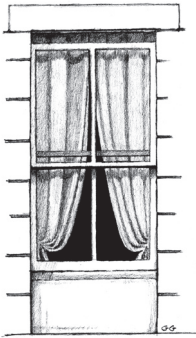
wood

glass

metal

WINDOWS

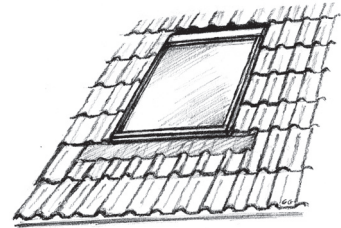
1) Why do houses have windows? _____



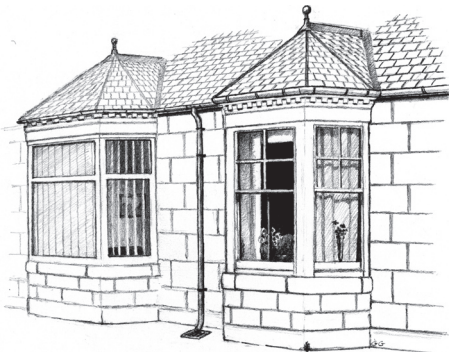
sash & case



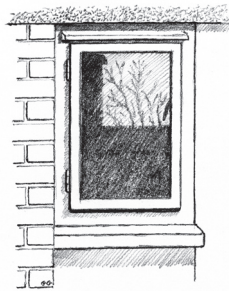
dormer



sky-light or roof-light



bay windows



side opening casement

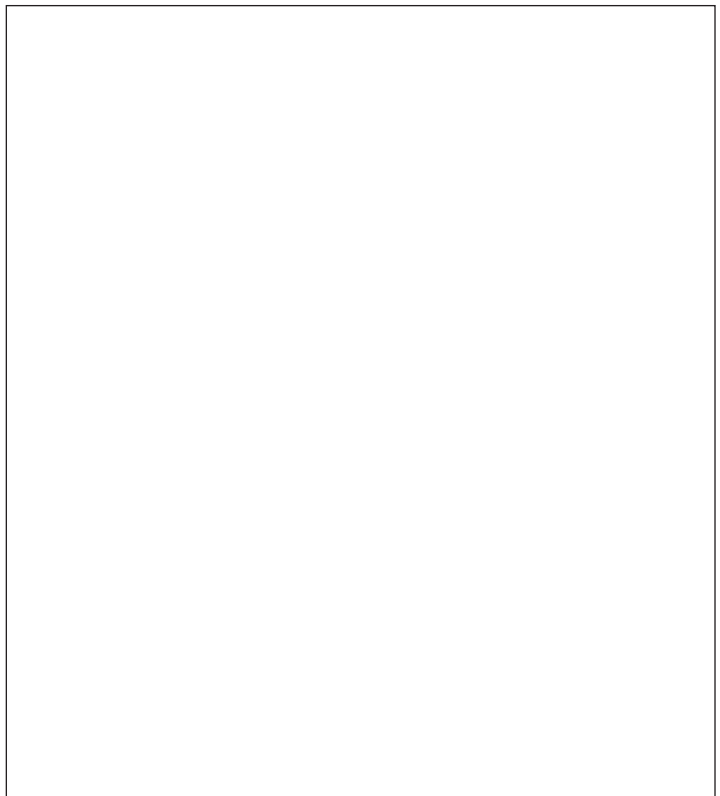


swivel / tilt & turn

2) Draw one of the windows you see on the house in front of you.

Make it as detailed as you can.

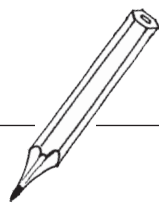
3) Which one of the windows shown looks like the one you have drawn? _____



TYPES OF HOMES : A survey of the types of homes found

in _____ on _____ (date)

- 1) Put ticks against each type of home you see on the trail.

| Type of Home | Tally | Total |
|---------------|---|-------|
| detached |  | |
| semi-detached | | |
| terraced | | |
| flat | | |
| bungalow | | |
| other type | | |

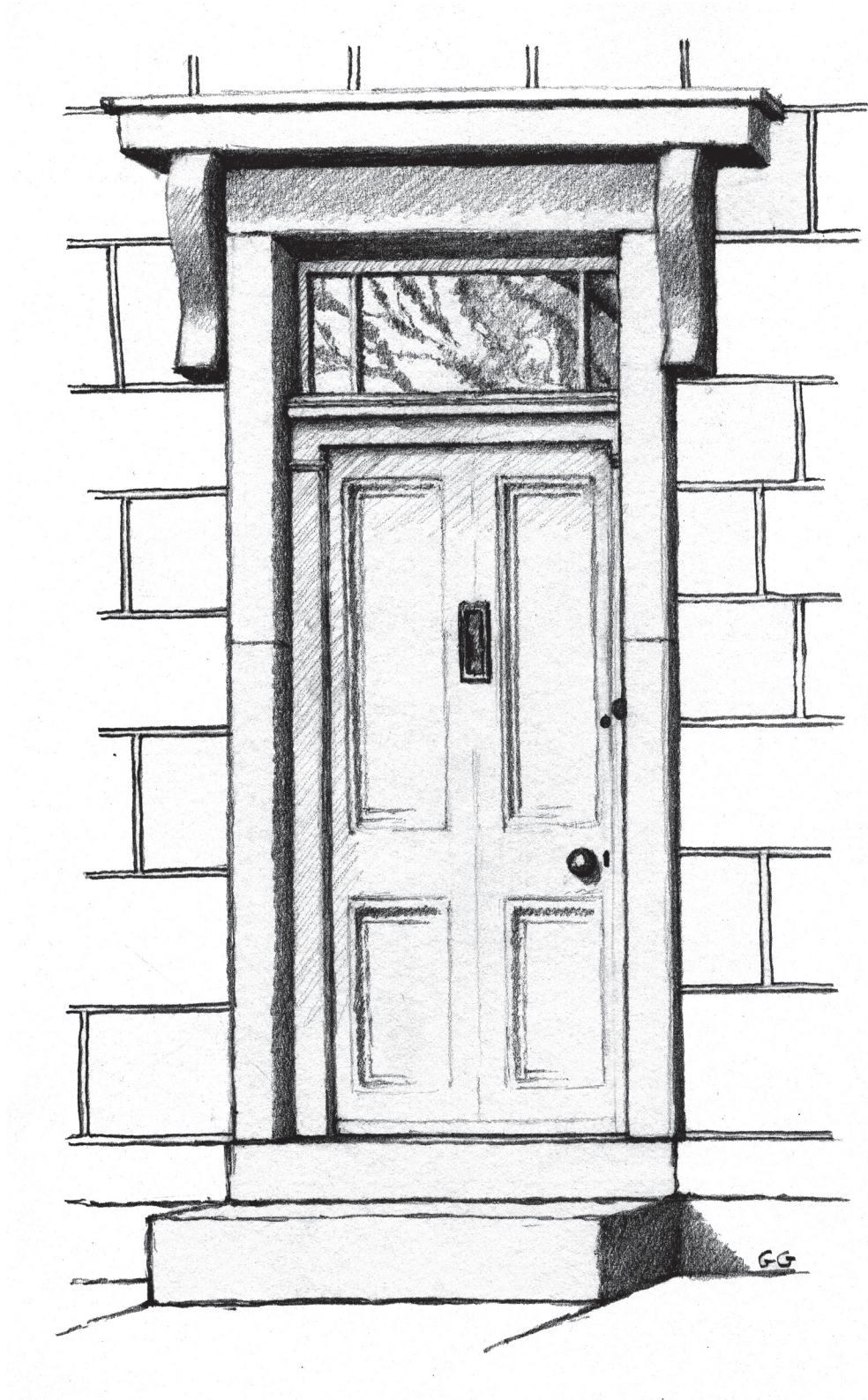
Show the information from the Tally Chart on the Graph.

| Type of Home | Number of Homes of each type | | | | | | | | | | | | | | | | | | | |
|---------------|------------------------------|--|--|--|--|--|--|--|--|--|--|--|--|--|--|--|--|--|--|--|
| detached | | | | | | | | | | | | | | | | | | | | |
| semi-detached | | | | | | | | | | | | | | | | | | | | |
| terraced | | | | | | | | | | | | | | | | | | | | |
| flat | | | | | | | | | | | | | | | | | | | | |
| bungalow | | | | | | | | | | | | | | | | | | | | |
| other type | | | | | | | | | | | | | | | | | | | | |

0 2 4 6 8 10 12 14 16 18 20 22 24 26 28 30 32 34 36 38 40 42 44

Keep this booklet in a safe place. You may want to refer to it again at some time.

It will remind you of the time when you looked at houses in your own area and in other parts of Scotland.



Notes

Devised: Georgina Johnstone & Catherine Robertson

Edited: Allan Paterson

Illustrated: George Galbraith

Layout: Steve Donaldson & John Sullivan

The *Houses and Homes* series of booklets is adapted and updated for the Curriculum for Excellence from the *Scottish Homes* series devised by the Aberdeen Urban Studies Trust

Supported by Aberdeen City Heritage Trust



Aberdeen Urban Studies Trust

Braeside School

Braeside Place

Aberdeen AB15 7TX

Tel: (01224) 313953

Email: enquiries@austrust.org.uk

Web: www.austrust.org.uk



ABERDEEN
CITY COUNCIL

© Aberdeen City Council and Aberdeen City Heritage Trust Nov 2013

Aberdeen Urban Studies Trust is a registered Scottish Charity no. SCO42423